



- NR16N3
- NR20N3
- NR16N3H
- NR20N3H
- NR25N3H
- NR20N3HX

PERFECTLY FITTED TO DRIVE PROFIT

SPECIFICATIONS
REACH TRUCKS 48V, 1.6 - 2.5 TONS

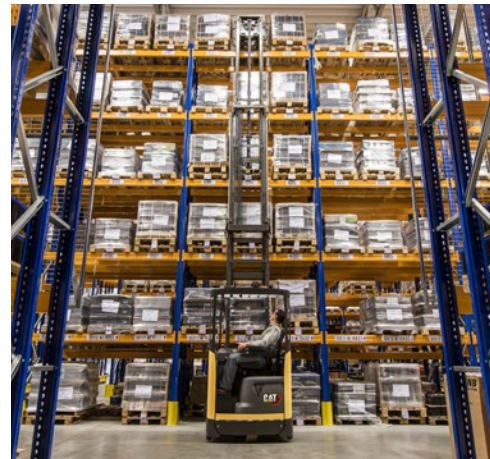


EQUIPPED FOR SUSTAINED PRODUCTIVITY

CAT® LIFT TRUCKS EXPANDS CHOICE IN ITS COMPREHENSIVE REACH TRUCK RANGE BY ADDING SIX NR-N3 STANDARD AND HEAVY DUTY MODELS. ERGONOMICALLY AND COMFORTABLY EQUIPPED FOR LONG HOURS IN THE DRIVING SEAT, THEY MAXIMISE YOUR PROFITS WITH HIGH THROUGHPUT AND LOW DOWNTIME EXPENSE.



For a comfortable, tailored fit, the truck's armrests and even its floor height are adjustable. *Palm Steering* and a multifunctional joystick allow relaxed but precise operation, while a tilting seat reduces strain when viewing loads at height.



Fast but smooth, using automatic drive and hydraulic motion speed controls which adapt to steering angle and lifting height. The Mast Tilt Control (MTC) damping system – minimizing delays – is standard or optional depending on mast choice.



To minimise downtime and maintenance costs, the trucks are robustly constructed, fitted with a user-friendly display and onboard diagnostics, and designed for quick service access. Total cost of operation can be reduced even further with the high-efficiency, long-life, virtually maintenance-free Li-ion battery option.



Along with standard duty models, choices include high-performance trucks for heavier duties and an 'X' model for heavy and extra high lifting – up to 12.1 metres. Each can be matched perfectly to its application thanks to a long list of options.

LOWER COST OF OWNERSHIP

- Robust construction minimises damage and wear, even in demanding multi-shift operations.
- Heavy duty drive wheel is highly durable and easy to maintain, with a larger diameter, extra width and unique tread design which increase grip and stability as well as lifetime.
- User-friendly display encourages correct use of truck.
- PIN code identification and programmability prevent unauthorised use and allow matching of truck performance settings to driver experience and application.
- Easy battery access enables driver to make quick checks without leaving the truck.
- Fast service access to systems and components reduces downtime.

UNMATCHED PRODUCTIVITY

- Automatic drive speed reduction makes smooth adjustments according to steering angle and fork height to help reinforce proper operating training when cornering or carrying raised loads.
- Automatic hydraulic motion control optimises lift, lower, reach, tilt and side shift speeds according to lift height and keeps all movements smooth, quiet and precise.
- Mast Tilt Control (MTC) damping system reduces oscillations by up to 80%, allowing faster load handling. (Standard on tilting masts with lift heights above 7.25 m. Optional for other tilting masts.)
- Tilting mast reduces aisle width necessary for lifts up to 10 m. (Not available on NR20N3HX, which has fork tilt instead.)
- 360-degree steering option enables fluid turning without stopping to change direction.
- Fast travel and lift speeds come as standard.
- High-performance option increases top speed from 12.5 to 14.5 km/h. (Not available on NR25N3H or NR20N3HX.)
- Motor-powered battery bed option enables exchanges in just one minute, for 24/7 productivity.

SAFETY AND ERGONOMICS

- *Palm Steering* on adjustable floating armrest offers relaxed driving position and operation with minimal movement, effort or strain – ideal if driver is seated for long periods.
- Multifunctional joystick with adjustable armrest fits hand ergonomically and positions all hydraulic controls optimally, minimizes effort and enables precise individual and simultaneous actions.
- Optional fingertip hydraulic controls with adjustable armrest ensure ergonomic hand positioning, anatomical support and free movement.
- Electrically adjustable floor height combines with adjustment of armrests and seat to ergonomically fit each driver.
- Tilting seat tips back by 18 degrees, to reduce strain when viewing and handling loads at height, and is adapted to the driver's weight.
- Tapered seat backrest enables easier turning of body – with less strain – toward driving direction.
- Spacious driver's compartment with high roof safely and comfortably accommodates users of all sizes.
- Excellent all-round view is enabled by design of mast, fork carriage, overhead bars, pillars and chassis, and by use of dark, non-reflective paint.
- Transparent overhead guard roof option gives unobstructed view of forks and load when handling at height and protects driver from both small and large falling objects.
- Intuitive display keeps drivers fully informed and is optimally positioned and angled for clear viewing.
- Direction control is switched using accelerator pedal, leaving right hand free to concentrate on hydraulic functions.
- Automotive pedal layout is intuitive to car drivers, while the operator presence switch is effortlessly activated by the weight of the left foot.
- Smooth entry and exit are aided by ergonomic grab handles and low intermediate step with non-slip surface.
- Standard safety features include operator presence switch, mast lock system and automatic parking brake.

STANDARD EQUIPMENT AND OPTIONS

	NR16N3	NR16N3H	NR20N3	NR20N3H	NR25N3H	NR20N3HX
GENERAL						
Automatic electric parking brake	●	●	●	●	●	●
Steering wheel angle indicator	●	●	●	●	●	●
Battery indicator with cut-out at 20% remaining battery level	●	●	●	●	●	●
Multifunctional colour display	●	●	●	●	●	●
Integrated side shift DTFV mast	●	●	●	●	●	●
Electrically adjustable floor height	●	●	●	●	●	●
Suspension seat with weight-controlled tilting high backrest	●	●	●	●	●	●
Increased drive speed 14,5 km/h	○	○	○	○	–	–
Chill store design, down to +1° C	●	●	●	●	●	●
Paper storage and cup holder	●	●	●	●	●	●
Battery reach-out	●	●	●	●	●	●
Battery on rollers	○	○	○	○	○	○
Motor power battery bed	○	○	○	○	○	○
Other RAL colour	○	○	○	○	○	○
POWER SOURCE						
Lead-acid battery	○	○	○	○	○	○
Battery cover plate	○	○	○	○	○	○
MAST, FORKS AND CARRIAGE						
Tilting mast	●	●	●	●	●	–
Fork tilt	○	○	○	○	○	●
Integral fork positioner/side shift DTFV mast	○	○	○	○	○	–
Load backrest	○	○	○	○	○	○
Load backrest in combination with fork positioner/side shift	○	○	○	○	○	–
Mast Tilt Control (MTC) damping system on tilting masts (std with lift heights >7.2 m, option for <7.2 m)	●	●	●	●	●	–
Lift stop with/without restart	○	○	○	○	○	○
Lift height indicator (std with load-weight-adjusted control option)	○	○	○	○	○	○
Level selector	○	○	○	○	○	○
Level assistance system, LAS	○	○	○	○	○	○
Load weight indicator (std with load-weight-adjusted control option)	○	○	○	○	○	○
Fork camera with RLED display	○	○	○	○	○	○
Horizontal forks	○	○	○	○	○	○
Central position of side shift	○	○	○	○	○	○
Automatic hydraulic motion control	●	●	●	●	●	●

* Li-ion battery option is available in selected regions

** Not in combination with cold store design, 0°C to -35°C

● Standard ○ Option

STANDARD EQUIPMENT AND OPTIONS

	NR16N3	NR16N3H	NR20N3	NR20N3H	NR25N3H	NR20N3HX
DRIVE AND LIFT CONTROLS						
Electric-powered <i>Palm Steering</i> unit on floating armrest	●	●	●	●	●	●
180-degree steering	●	●	●	●	●	●
360-degree steering	○	○	○	○	○	○
Active Spin Reduction	○	○	○	○	○	○
Automatic drive speed reduction	●	●	●	●	●	●
Hands-free direction control, HFDC, via accelerator pedal	●	●	●	●	●	●
Hand-operated direction control	○	○	○	○	○	○
Multifunctional joystick	●	●	●	●	●	●
Fingertip hydraulic control	○	○	○	○	○	○
Midi steering wheel	○	○	○	○	○	○
Key switch entry	○	○	○	○	○	○
Creep speed at preset level 500 mm	○	○	○	○	○	○
Creep speed at other levels	○	○	○	○	○	○
Load-weight-adjusted functioning of automatic drive speed and hydraulic motion controls	○	○	○	○	○	○
ELECTRIC						
Blue/red point safety light, towards driving direction	○	○	○	○	○	○
Automatic logoff	○	○	○	○	○	○
Working lights LED	○	○	○	○	○	○
Working lights LED for cabin	○	○	○	○	○	○
Warning light on the roof	○	○	○	○	○	○
Warning light for heated cabin	○	○	○	○	○	○
12V connector	○	○	○	○	○	○
Converter 48 - 12 V	○	○	○	○	○	○
Service alarm	○	○	○	○	○	○
OHG AND CABIN						
Heated cabin**	○	○	○	○	○	○
Window opening in cabin door	○	○	○	○	○	○
2-way intercom for cold store cabin	○	○	○	○	○	○
Transparent overhead guard roof	○	○	○	○	○	○
Mesh metal on overhead guard	○	○	○	○	○	○
Heated seat – fabric	○	○	○	○	○	○
Heated seat – PVC	○	○	○	○	○	○
Headrest for seat	○	○	○	○	○	○
Rear view mirror	○	○	○	○	○	○
Writing desk	○	○	○	○	○	○
Equipment holder, RAM system size C	○	○	○	○	○	○
Equipment holder, RAM system size C, 2 pcs	○	○	○	○	○	○
Equipment holder, RAM system size D	○	○	○	○	○	○
WHEEL OPTIONS						
Vulkollan® traction wheel 93 Shore	●	●	●	●	—	●
Vulkollan® traction wheel 95 Shore	○	○	○	○	○	○
Tractothan® traction wheel 93 Shore	○	○	○	○	○	○
Load wheel Ø 230mm	●	○	○	○	—	—
Load wheel Ø 285mm	—	●	●	●	●	●
Load wheel brakes, incl. Ø 285mm load wheel	—	○	○	○	●	○
Load wheel covers	○	○	○	○	○	○
ENVIRONMENT						
Cold store design, 0°C to -35°C **	○	○	○	○	○	○



Multifunctional joystick.



Optional Midi steering wheel.



Optional transparent overhead guard roof.

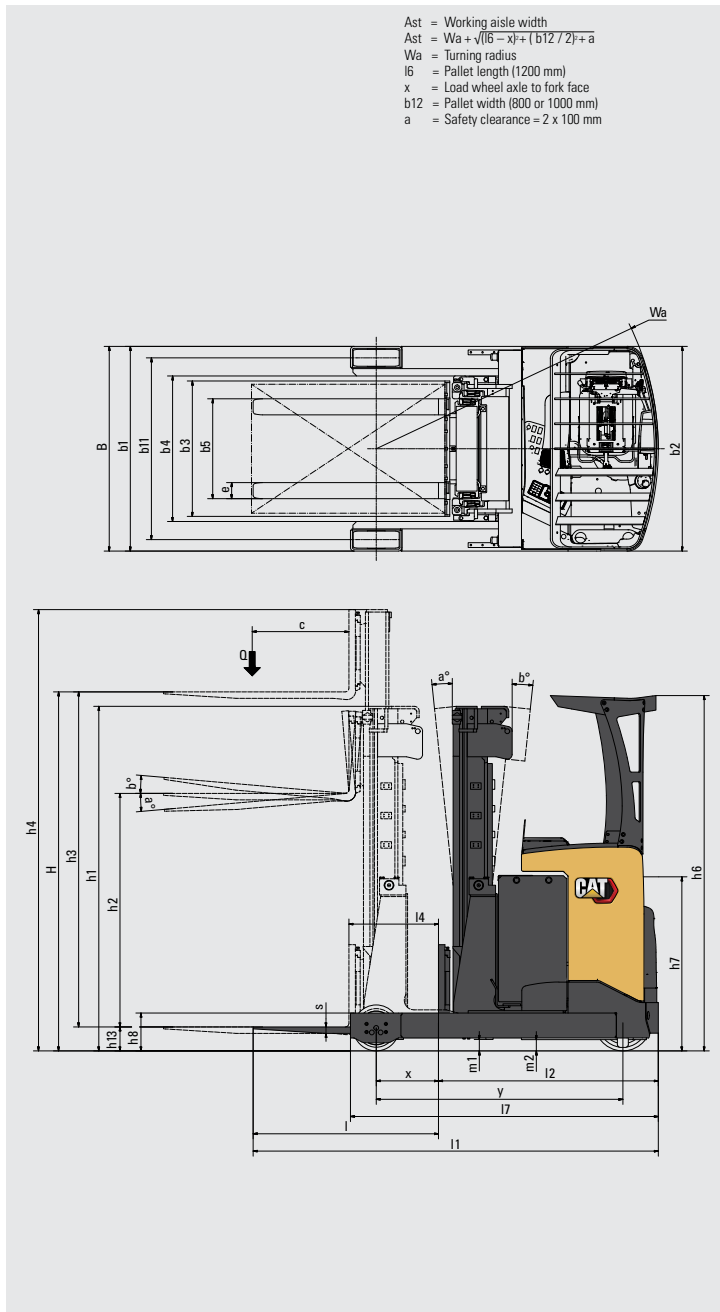


Optional writing desk.

● Standard ○ Option

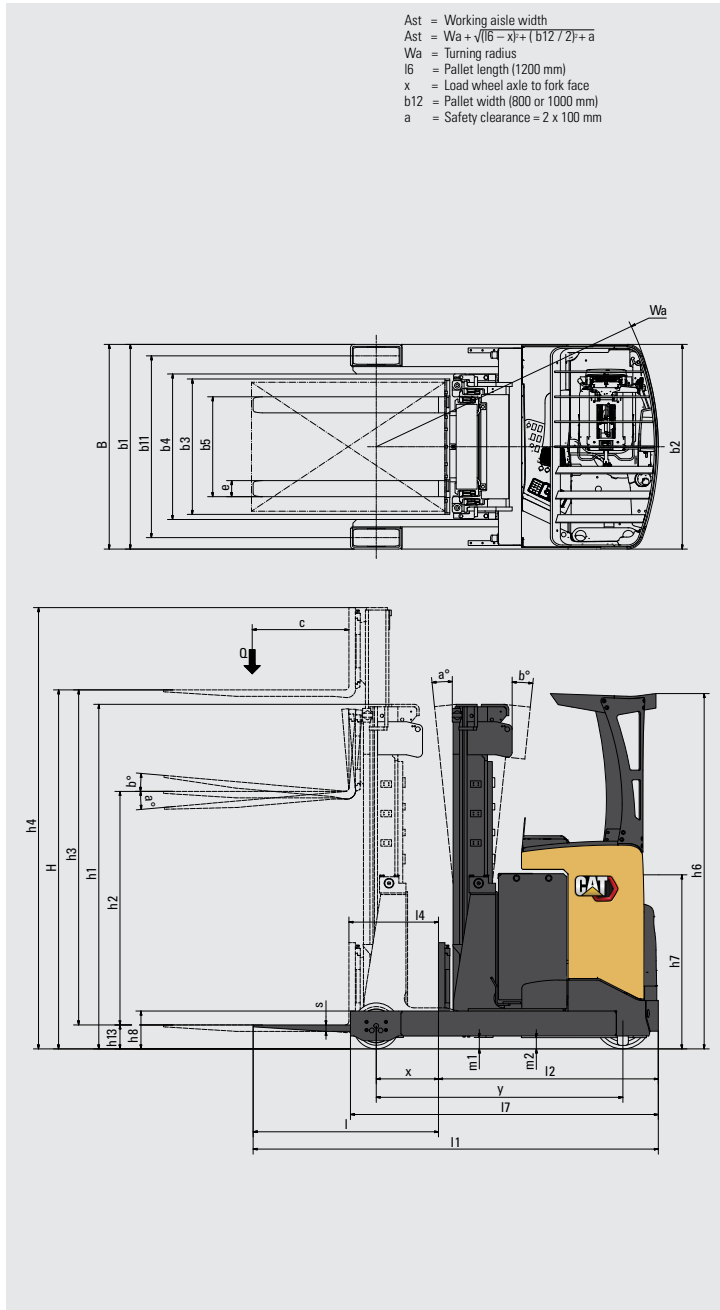
* Li-ion battery option is available in selected regions
 ** Not in combination with cold store design, 0°C to -35°C

Characteristics			Cat Lift Trucks	Cat Lift Trucks	Cat Lift Trucks
1.1 Manufacturer			NR16N3	NR16N3H	NR20N3
1.2	Manufacturer's model designation		Battery	Battery	Battery
1.3	Power source		Sit-on	Sit-on	Sit-on
1.4	Operator type		1600	1600	2000
1.5	Load capacity	Q (kg)	600	600	600
1.6	Load centre distance	c (mm)	See table	See table	See table
1.8	Load wheel axle to fork face (forks lowered)	x (mm)	1448		1530
1.9	Wheelbase	y (mm)			
Weight					
2.1b	Truck weight without load, with maximum battery weight	kg	3590	4320	4140
2.3	Axle loadings without load & with maximum battery weight, drive / load side	kg	2000 / 1190	2360 / 1760	2290 / 1450
2.4	Axle loading, mast forward, with nominal load, drive / load side	kg	650 / 4140	1040 / 4680	550 / 5190
2.5	Axle loading, mast retracted, with nominal load, drive / load side	kg	1750 / 3040	1900 / 3820	2040 / 3700
Wheels, Drive Train					
3.1	Tyres: PT = Power Thane, Vul = Vulkollan, P = Polyurethane, N = Nylon, R = Rubber drive / load side		Vul	Vul	Vul
3.2	Tyre dimensions, drive side	Ø (mm)	355 x 155	355 x 155	355 x 155
3.3	Tyre dimensions, load side	Ø (mm)	285 x 105	285 x 105	285 x 105
3.5	Number of wheels, load / drive side (x = driven)		2 / 1 x	2 / 1 x	2 / 1 x
3.7	Track width (centre of tyres), load side	b11 (mm)	1128	1128 / 1255	1128 / 1255
Dimensions					
4.1	Fork tilt, forwards / backwards	∅/β °	1 / 4	1 / 4	1 / 4
4.2a	Height with mast lowered	h1 (mm)	See table	See table	See table
4.3	Free lift	h2 (mm)	See table	See table	See table
4.4	Lift height	h3 (mm)	See table	See table	See table
4.5	Height with mast extended	h4 (mm)	See table	See table	See table
4.7	Height to top of overhead guard	h6 (mm)	2205	2205	2205
4.8	Seat or stand height	h7 (mm)	1.153 ¹⁾	1.153 ¹⁾	1.153 ¹⁾
4.10	Height of support legs	h8 (mm)	235	235	235
4.15	Fork height, fully lowered	h13 (mm)	65	65	65
4.19	Overall length	l1 (mm)	See table	See table	See table
4.20	Length to fork face	l2 (mm)	See table	See table	See table
4.21	Overall width	b1/b2 (mm)	1270	1270 / 1397	1270 / 1397
4.22	Fork dimensions (thickness, width, length)	s / e / l (mm)	40 / 100 / 1150	40 / 100 / 1150	42 / 100 / 1150
4.23	Fork carriage to DIN		FEM 2A	FEM 2A	FEM 2A
4.24	Fork carriage width	b3 (mm)	830	830	830
4.25	Outside width over forks (minimum / maximum)	b5 (mm)	316 - 697	316 - 697	316 - 697
4.26	Inner width of support legs	b4 (mm)	912	903 / 1030	903 / 1030
4.28	Mast reach	l4 (mm)	See table	See table	See table
4.32	Ground clearance at centre of wheelbase, (forks lowered)	m2 (mm)	70	70	70
4.33a	Working aisle width (Ast) with 1000 x 1200 mm pallets, load crosswise	Ast (mm)	See table	See table	See table
4.34a	Working aisle width (Ast) with 800 x 1200 mm pallets, load lengthwise	Ast (mm)	See table	See table	See table
4.35	Turning radius	Wa (mm)	See table	See table	See table
4.37	Truck length including support legs	l7 (mm)	1800	1800	1910
Performance					
5.1	Travel speed, with /without load	km / h	14.3 / 14.5	14.3 / 14.5	14.3 / 14.5
5.2	Lifting speed, with /without load	m / s	0.49 / 0.80	0.48 / 0.68	0.37 / 0.63
5.3	Lowering speed, with /without load	m / s	0.49 / 0.48	0.5 / 0.48	0.55 / 0.43
5.5	Rated drawbar pull, with /without load	N	0.2 / 0.2	0.2 / 0.2	0.2 / 0.2
5.8	Maximum gradeability with /without load	%	14.9 / 19.6	11 / 15.2	11 / 16.5
5.9	Acceleration time (10 metres) with /without load	s	4.8 / 4.4	5.1 / 4.6	4.8 / 4.4
5.10	Service brakes (mechanical /hydraulic /electric /pneumatic)		Electric	Electric	Electric
Electric motors					
6.1	Drive motor capacity (60 min. short duty)	kW	7.2	7.2	7.2
6.2	Lift motor output at 15% duty factor	kW	15	15	15
6.4	Battery voltage/capacity at 5-hour discharge	V / Ah	48 - 465 / 620 / 775	48 - 620 / 775	48 - 620 / 775 / 930
6.5	Battery weight	kg	712 / 892 / 1063	892 / 1063	892 / 1063 / 1240
Miscellaneous					
8.1	Type of drive control		Stepless	Stepless	Stepless
10.1	Maximum operating pressure for attachments	bar	150	150	150
10.2	Oil flow for attachments	l / min	25	25	25
10.7	Level of noise at the ear level of the driver according to EN 12 053:2001 and EN ISO 4871 in work LpAZ	dB (A)	60.8	60.8	60.8



1) Measured with standard seat to SIP point

Characteristics				Cat Lift Trucks	Cat Lift Trucks	Cat Lift Trucks
				NR20N3H	NR20N3HX	NR25N3H
1.1	Manufacturer			Battery	Battery	Battery
1.2	Manufacturer's model designation			Sit-on	Sit-on	Sit-on
1.3	Power source			2000	2000	2500
1.4	Operator type			600	600	600
1.5	Load capacity	Q	(kg)	See table	See table	See table
1.6	Load centre distance	c	(mm)	1530	1530	1630
1.8	Load wheel axle to fork face (forks lowered)	x	(mm)			
1.9	Wheelbase	y	(mm)			
Weight						
2.1b	Truck weight without load, with maximum battery weight		kg	4550	5200	4600
2.3	Axle loadings without load & with maximum battery weight, drive / load side		kg	2400 / 1750	2790 / 2410	2400 / 2000
2.4	Axle loading, mast forward, with nominal load, drive / load side		kg	650 / 5500	1060 / 6140	800 / 6100
2.5	Axle loading, mast retracted, with nominal load, drive / load side		kg	2050 / 4100	2280 / 4920	2100 / 4100
Wheels, Drive Train						
3.1	Tyres: PT = Power Thane, Vul = Vulkollan, P = Polyurethane, N = Nylon, R = Rubber drive / load side			Vul	Vul	Vul
3.2	Tyre dimensions, drive side	∅	(mm)	355 x 155	355 x 155	355 x 155
3.3	Tyre dimensions, load side	∅	(mm)	285 x 105	285 x 105	285 x 105
3.5	Number of wheels, load / drive side (x = driven)			2 / 1 x	2 / 1 x	2 / 1 x
3.7	Track width (centre of tyres), load side	b11	(mm)	1128 / 1255	1255	1255
Dimensions						
4.1	Fork tilt, forwards / backwards	∅/β	°	1 / 4	1 / 4	1 / 4
4.2a	Height with mast lowered	h1	(mm)	See table	See table	See table
4.3	Free lift	h2	(mm)	See table	See table	See table
4.4	Lift height	h3	(mm)	See table	See table	See table
4.5	Height with mast extended	h4	(mm)	See table	See table	See table
4.7	Height to top of overhead guard	h6	(mm)	2205	2205	2205
4.8	Seat or stand height	h7	(mm)	1.153 ¹⁾	1.153 ¹⁾	1.153 ¹⁾
4.10	Height of support legs	h8	(mm)	235	235	235
4.15	Fork height, fully lowered	h13	(mm)	65	65	65
4.19	Overall length	l1	(mm)	See table	See table	See table
4.20	Length to fork face	l2	(mm)	See table	See table	See table
4.21	Overall width	b1/b2	(mm)	1270 / 1397		1397
4.22	Fork dimensions (thickness, width, length)	s / e / l	(mm)	401 / 100 / 1150	40 / 100 / 1150	45 / 100 / 1150
4.23	Fork carriage to DIN			FEM 2A	FEM 2A	FEM 2A
4.24	Fork carriage width	b3	(mm)	830	830	830
4.25	Outside width over forks (minimum / maximum)	b5	(mm)	316 - 697	316 - 697	316 - 697
4.26	Inner width of support legs	b4	(mm)	903 / 1030	1030	1030
4.28	Mast reach	l4	(mm)	See table	See table	See table
4.32	Ground clearance at centre of wheelbase, (forks lowered)	m2	(mm)	70	70	70
4.33a	Working aisle width (Ast) with 1000 x 1200 mm pallets, load crosswise	Ast	(mm)	See table	See table	See table
4.34a	Working aisle width (Ast) with 800 x 1200 mm pallets, load lengthwise	Ast	(mm)	See table	See table	See table
4.35	Turning radius	Wa	(mm)	See table	See table	See table
4.37	Truck length including support legs	l7	(mm)	1910		2010
Performance						
5.1	Travel speed, with /without load		km / h	14.3 / 14.5	12 / 12	12 / 12
5.2	Lifting speed, with /without load		m / s	0.37 / 0.63	0.36 / 0.52	0.33 / 0.52
5.3	Lowering speed, with /without load		m / s	0.55 / 0.43	0.54 / 0.45	0.55 / 0.43
5.5	Rated drawbar pull, with /without load		N	0.2 / 0.2	0.2 / 0.2	0.2 / 0.2
5.8	Maximum gradeability with /without load		%	6.3 / 9.4	6.1 / 8.4	9.2 / 14.7
5.9	Acceleration time (10 metres) with /without load		s	4.8 / 4.4	4.8 / 4.4	4.8 / 4.4
5.10	Service brakes (mechanical /hydraulic /electric /pneumatic)			Electric	Electric	Electric
Electric motors						
6.1	Drive motor capacity (60 min. short duty)		kW	7.2	7.2	7.2
6.2	Lift motor output at 15% duty factor		kW	15	15	15
6.4	Battery voltage/capacity at 5-hour discharge		V / Ah	48 - 620 / 775 / 930	48 - 775 / 930	48 - 775 / 930
6.5	Battery weight		kg	892 / 1063 / 1240	1063 / 1240	1063 / 1240
Miscellaneous						
8.1	Type of drive control			Stepless	Stepless	Stepless
10.1	Maximum operating pressure for attachments		bar	150	150	150
10.2	Oil flow for attachments		l / min	25	25	25
10.7	Level of noise at the ear level of the driver according to EN 12 053:2001 and EN ISO 4871 in work LpAZ		dB (A)	60.8	60.8	60.8



1) Measured with standard seat to SIP point

NR16N3 - NR20N3				
Mast Type	h3 + h13	h1	h2 + h13	h4
	mm	mm	mm	mm
DTFV	4800	2153	1645	5345
	5400	2353	1845	5945
	5700	2453	1945	6245
	6300	2653	2145	6845
	6750	2803	2295	7295
	7250	2970	2462	7795
	7950	3203	2695	8495
	8450	3370	2862	8995
	8950	3536	3028	9495

Mast Performance and Capacity

- h1 Lowered mast height
- h2 + h13 Free lift
- h3 + h13 Lift height
- h4 Raised mast height
- Q Lifting capacity, rated load
- c Load centre (distance)

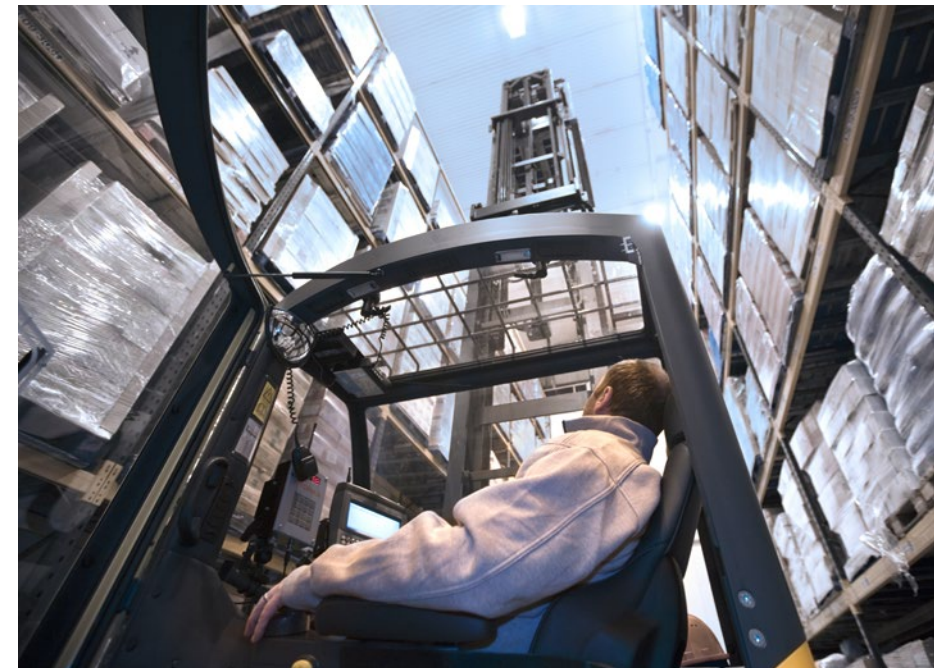
NR16N3H				
Mast Type	h3 + h13	h1	h2 + h13	h4
	mm	mm	mm	mm
DTFV	6350	2972	2432	6890
	7050	3205	2665	7590
	7550	3372	2832	8090
	8050	3538	2998	8590
	8500	3688	3148	9040
	8950	3838	3298	9490
	9600	4055	3515	10140
	10200	4255	3715	10740
	10800	4455	3915	11340

NR20N3H				
Mast Type	h3 + h13	h1	h2 + h13	h4
	mm	mm	mm	mm
DTFV	6350	2970	2462	6895
	7050	3203	2695	7595
	7550	3370	2862	8095
	8050	3536	3028	8595
	8500	3686	3178	9045
	8950	3836	3328	9495
	9600	4053	3545	10145
	10200	4253	3745	10745
	10800	4453	3945	11345
		11500	4686	4178

NR25N3H				
Mast Type	h3 + h13	h1	h2 + h13	h4
	mm	mm	mm	mm
DTFV	4800	2450	1795	5490
	5850	2800	2145	6540
	6350	2967	2312	7040
	7050	3200	2545	7740
	7550	3367	2712	8240
	8050	3533	2878	8740
	8500	3683	3028	9190
		8950	3833	3178

NR20N3HX				
Mast Type	h3 + h13	h1	h2 + h13	h4
	mm	mm	mm	mm
DTFV	9600	4053	3545	10145
	10200	4253	3745	10745
	10800	4453	3945	11345
	11100	4553	4045	11645
	11600	4720	4210	12145
		12100	4886	4378

Model	Battery Capacity	Battery Weight	4.33a Ast	4.34a Ast	4.28 L4	4.20 L2	4.19 L1	1.8 x	4.35 Wa
	Ah	kg	mm	mm	mm	mm	mm	mm	mm
NR16N3	465	708	2689	2728	596	1229	2379	439	1668
	620	892	2740	2792	524	1301	2451	367	1668
	775	1063	2794	2857	452	1373	2535	295	1668
NR16N3H	620	892	2761	2823	490	1335	2485	306	1643
	775	1063	2816	2889	418	1407	2557	234	1643
NR20N3	620	892	2770	2808	625	1310	2460	551	1750
	775	1063	2821	2873	553	1382	2532	369	1750
	930	1240	2875	2938	481	1454	2604	297	1750
NR20N3H	620	892	2788	2831	600	1335	2485	416	1750
	775	1063	2839	2895	528	1407	2557	344	1750
	930	1240	2894	2961	456	1479	2629	272	1750
NR20N3HX	930	1240	2906	2976	430	1495	2645	256	1750
NR25N3H	775	1063	2871	2910	628	1412	2562	439	1850
	930	1240	2921	2974	556	1484	2634	367	1850



Optional cabin fitted with transparent overhead guard roof with protective mesh metal.

WESC2124-01 (04/24) © 2023 MLE B.V. (registration no. 33274459). © 2024 Mitsubishi Logisnext Americas Inc. All rights reserved. CAT, CATERPILLAR, LET'S DO THE WORK, their respective logos, "Caterpillar Corporate Yellow", the "Power Edge" and Cat "Modern Hex" trade dress as well as corporate and product identity used herein, are trademarks of Caterpillar and may not be used without permission.

NOTE: Performance specifications may vary depending on standard manufacturing tolerances, vehicle condition, types of tyres, floor or surface conditions, applications, or operating environment. Trucks may be shown with non-standard options. Specific performance requirements and locally available configurations should be discussed with your Cat lift trucks Dealer. Cat Lift Trucks follows a policy of continual product improvement. For this reason, some materials, options and specifications could change without notice.



NR14N3C



COMPACT EFFICIENCY

SPECIFICATIONS

LIGHT REACH TRUCKS 48V, 1.4 TONS



SAVE TIME, MONEY AND SPACE

FOR THE NARROWEST OF AISLES, YOU NEED THE MOST COMPACT OF ALL CAT® REACH TRUCKS. THESE ECONOMICAL LIGHT AND MEDIUM DUTY MODELS, WITH LIFT HEIGHTS UP TO 7.25 METERS, OFFER GREAT MANEUVERABILITY, EFFICIENT PERFORMANCE AND FULL CAT QUALITY.



NR14N3C shown with tapered overhead guard and rail guidance options



Drivers can operate quickly and precisely, with minimum effort, thanks to the *Palm Steering* unit and multifunctional joystick – each with adjustable floating armrests. Just 1.12 metres wide, and giving all-round views, the trucks are ideally suited to working in tight spaces.

Drive and hydraulic functions are automatically speed-controlled, according to steering angle and lift height, for rapid but smooth action. Tilting masts are also fitted as standard and the Mast Tilt Control (MTC) damping system can be optionally specified.



Time and money are saved by robust and wear-resistant construction, a user-friendly display with onboard diagnostics, and quick service access features. Good examples of cost-saving design include the heavy duty drive wheel, and accessibility for battery checks without leaving the truck.



All three models share the space-saving narrow chassis, but the NR14N3C also has a tapered overhead guard (optional), for drive-in racking, and can be equipped with optional rail guidance wheels. Optimized matching with application and driver needs is possible through programming and option selection.

LOWER COST OF OWNERSHIP

- Robust construction minimises damage and wear, even in demanding multi-shift operations.
- Heavy duty drive wheel is highly durable and easy to maintain, with a larger diameter, extra width and unique tread design which provide excellent grip and stability as well as lifetime.
- User-friendly display encourages correct use of truck.
- PIN code identification and programmability prevent unauthorised use and allow matching of truck performance settings to driver experience and application.
- Easy battery access enables driver to make quick checks without leaving the truck.
- Fast service access to systems and components reduces downtime.

UNMATCHED PRODUCTIVITY

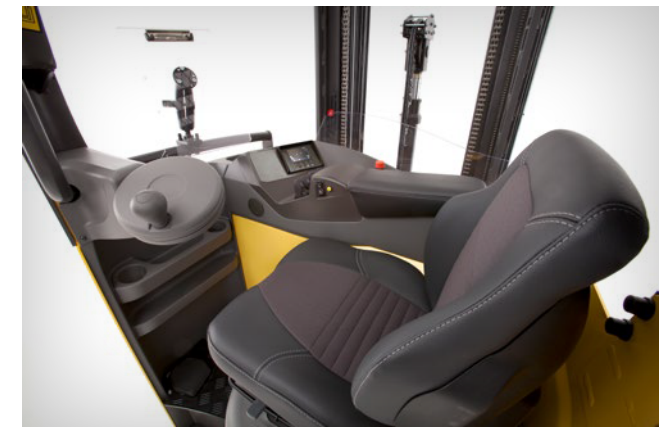
- Automatic drive speed reduction makes smooth adjustments according to steering angle and fork height to help reinforce training and operator confidence when cornering or carrying raised loads.
- Automatic hydraulic motion control optimises lift, lower, reach, tilt and side shift speeds according to lift height and keeps all movements smooth, quiet and precise. (Standard on NR14N3C, optional on others.)
- Mast Tilt Control (MTC) damping system reduces oscillations by up to 80%, allowing faster and stable load handling.
- Tilting mast reduces aisle width necessary for handling.
- 360-degree steering option enables fluid turning without stopping to change direction.
- Fast travel and lift speeds come as standard.
- Small chassis (1.12 m wide) is ideal for working in tight spaces.
- Drive-in racking adaptations on NR14N3C include the options of tapered overhead guard and extra wheels for rail guidance.



Fingertip control option.



Rail guidance option.



Interior with midi steering wheel option shown.

SAFETY AND ERGONOMICS

- *Palm Steering* on adjustable floating armrest offers relaxed driving position and operation with minimal movement, effort or strain – ideal if driver is seated for long periods.
- Multifunctional joystick with adjustable armrest fits hand ergonomically, positions all hydraulic controls optimally, minimises effort and enables precise individual and simultaneous actions.
- Optional fingertip hydraulic controls with adjustable armrest ensure ergonomic hand positioning, anatomical support and free movement.
- Spacious driver's compartment with high roof safely and comfortably accommodates users of a wide range of sizes.
- Excellent all-round view is enabled by design of mast, fork carriage, overhead bars, pillars and chassis, and by use of dark, non-reflective paint.
- Intuitive display keeps drivers fully informed and is optimally positioned and angled for clear viewing.
- Direction control is switched using accelerator pedal, leaving right hand free to concentrate on hydraulic functions.
- Automotive pedal layout is intuitive to car drivers, while the operator presence switch is effortlessly activated by the weight of the left foot.
- Smooth entry and exit are aided by ergonomic grab handles and low intermediate step with non-slip surface.
- Standard safety features include operator presence switch, mast lock system and automatic parking brake.

STANDARD EQUIPMENT AND OPTIONS

	NR14N3C
GENERAL	
Automatic electric parking brake	●
Steering wheel angle indicator	●
Battery indicator with cut-out at 20% remaining battery level	●
Multifunctional colour display	●
Integrated side shift DTFV mast	●
Rail guidance for drive-in racking	○
Chill store design, down to +1° C	●
Paper storage and cup holder	●
Battery reach-out	●
Battery on rollers	○
Other RAL colour	○
POWER SOURCE	
Lead-acid battery	○
Battery cover plate	○
MAST, FORKS AND CARRIAGE	
Tilting mast	●
Fork tilt	○
Integral fork positioner/side shift DTFV mast	○
Load backrest	○
Load backrest in combination with fork positioner/side shift	○
Mast Tilt Control (MTC) damping system on tilting masts	●
Lift stop with/without restart	○
Lift height indicator (std with load-weight-adjusted control option)	○
Level selector	○
Level assistance system, LAS	○
Load weight indicator (std with load-weight-adjusted control option)	○
Horizontal forks	○
Central position of side shift	○
Automatic hydraulic motion control	●

● Standard ○ Option

STANDARD EQUIPMENT AND OPTIONS

	NR14N3C
DRIVE AND LIFT CONTROLS	
Electric-powered <i>Palm Steering</i> unit on floating armrest	●
180-degree steering	●
360-degree steering	○
Active Spin Reduction	○
Automatic drive speed reduction	●
Hands-free direction control, HFDC, via accelerator pedal	●
Hand-operated direction control	○
Multifunctional joystick	●
Fingertip hydraulic control	○
Midi steering wheel	○
Key switch entry	○
Creep speed at preset level 500 mm	○
Creep speed at other levels	○
Load-weight-adjusted functioning of automatic drive speed and hydraulic motion controls	○
ELECTRIC	
Blue/red point safety light, towards driving direction	○
Automatic logoff	○
Working lights LED	○
Working lights LED for cabin	○
Warning light on the roof	○
Warning light for heated cabin	○
12V connector	○
Converter 48 - 12 V	○
Service alarm	○

	NR14N3C
OHG AND CABIN	
Heated cabin	○
Window opening in cabin door	○
2-way intercom for cold store cabin	○
Tapered overhead guard	○
Mesh metal on overhead guard	○
Heated seat – fabric	○
Heated seat – PVC	○
Rear view mirror	○
Writing desk	○
Equipment holder, RAM system size C	○
Equipment holder, RAM system size C, 2 pcs	○
Equipment holder, RAM system size D	○
WHEEL OPTIONS	
Vulkollan® traction wheel 93 Shore	●
Tractothan® traction wheel 93 Shore	○
Load wheel Ø 220 mm	●
ENVIRONMENT	
Cold store design, 0°C to -35°C*	○

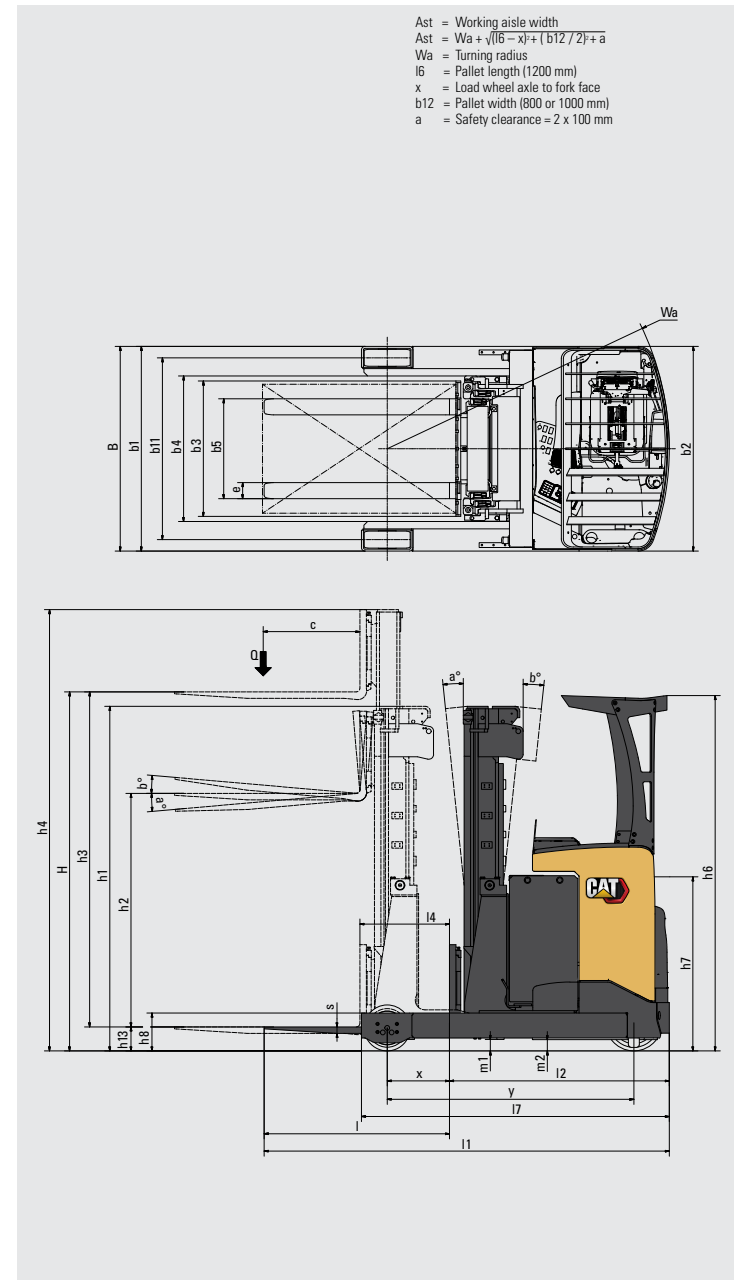
● Standard ○ Option



Heated cabin with tapered overhead guard option.

Characteristics		
1.1	Manufacturer	
1.2	Manufacturer's model designation	
1.3	Power source	
1.4	Operator type	
1.5	Load capacity	Q (kg)
1.6	Load centre distance	c (mm)
1.8	Load wheel axle to fork face (forks lowered)	x (mm)
1.9	Wheelbase	y (mm)
Weight		
2.1b	Truck weight without load, with maximum battery weight	kg
2.3	Axle loadings without load & with maximum battery weight, drive / load side	kg
2.4	Axle loading, mast forward, with nominal load, drive / load side	kg
2.5	Axle loading, mast retracted, with nominal load, drive / load side	kg
Wheels, Drive Train		
3.1	Tyres: PT = Power Thane, Vul = Vulkollan, P = Polyurethane, N = Nylon, R = Rubber drive / load side	
3.2	Tyre dimensions, drive side	∅ (mm)
3.3	Tyre dimensions, load side	∅ (mm)
3.5	Number of wheels, load / drive side (x = driven)	
3.7	Track width (centre of tyres), load side	b11 (mm)
Dimensions		
4.1	Fork tilt, forwards / backwards	∂/β °
4.2a	Height with mast lowered	h1 (mm)
4.3	Free lift	h2 (mm)
4.4	Lift height	h3 (mm)
4.5	Height with mast extended	h4 (mm)
4.7	Height to top of overhead guard	h6 (mm)
4.8	Seat or stand height	h7 (mm)
4.10	Height of support legs	h8 (mm)
4.15	Fork height, fully lowered	h13 (mm)
4.19	Overall length	l1 (mm)
4.20	Length to fork face	l2 (mm)
4.21	Overall width	b1/b2 (mm)
4.22	Fork dimensions (thickness, width, length)	s / e / l (mm)
4.23	Fork carriage to DIN	
4.24	Fork carriage width	b3 (mm)
4.25	Outside width over forks (minimum /maximum)	b5 (mm)
4.26	Inner width of support legs	b4 (mm)
4.28	Mast reach	l4 (mm)
4.32	Ground clearance at centre of wheelbase, (forks lowered)	m2 (mm)
4.33a	Working aisle width (Ast) with 1000 x 1200 mm pallets, load crosswise	Ast (mm)
4.34a	Working aisle width (Ast) with 800 x 1200 mm pallets, load lengthwise	Ast (mm)
4.35	Turning radius	Wa (mm)
4.37	Truck length including support legs	l7 (mm)
Performance		
5.1	Travel speed, with /without load	km / h
5.2	Lifting speed, with /without load	m / s
5.3	Lowering speed, with /without load	m / s
5.5	Rated drawbar pull, with /without load	N
5.8	Maximum gradeability with /without load	%
5.9	Acceleration time (10 metres) with /without load	s
5.10	Service brakes (mechanical /hydraulic /electric /pneumatic)	
Electric motors		
6.1	Drive motor capacity (60 min. short duty)	kW
6.2	Lift motor output at 15% duty factor	kW
6.4	Battery voltage/capacity at 5-hour discharge	V / Ah
6.5	Battery weight	kg
Miscellaneous		
8.1	Type of drive control	
10.1	Maximum operating pressure for attachments	bar
10.2	Oil flow for attachments	l / min
10.7	Level of noise at the ear level of the driver according to EN 12 053:2001 and EN ISO 4871 in work LpAZ	dB (A)

Cat Lift Trucks	
NR14N3C	
Battery	
Sit-on	
1400	
600	
See table	
1378	
3410	
1780 / 1230	
570 / 3840	
1450 / 2960	
Vul	
355 x 155	
220 x 85	
2 / 1 x	
995	
1 / 4	
See table	
See table	
See table	
See table	
2205	
1.146 ¹⁾	
235	
65	
See table	
See table	
1120	
40 / 100 / 1150	
FEM 2A	
830	
316 / 697	
900	
See table	
70	
See table	
See table	
1725	
12.3 / 12.5	
0.32 / 0.49	
0.57 / 0.48	
0.2 / 0.2	
13.1 / 19.6	
4.9 / 4.4	
Electric	
5.9	
11	
48 - 465 / 620 / 775	
708 / 890 / 1063	
Stepless	
150	
25	
57.4	



- 1) Measured with standard seat to SIP point
- 9) Mast tilt
- 10) T mast
- 11) DTFV mast

NR14N3C				
Mast Type	h3 + h13	h1	h2 + h13	h4
	mm	mm	mm	mm
DTFV	4800	2153	1645	5345
	5400	2353	1845	5945
	5700	2453	1945	6245
	6300	2653	2145	6845
	6750	2803	2295	7295
	7250	2970	2462	7795
	7950	3203	2695	8495
	8450	3370	2862	8995
	8950	3536	3028	9495

Mast Performance and Capacity

T	Duplex mast without freelift
DTFV	Triplex
h1	Lowered mast height
h2 + h13	Free lift
h3 + h13	Lift height
h4	Raised mast height
Q	Lifting capacity, rated load
c	Load centre (distance)

Model	Battery Capacity	Battery Weight	4.33a Ast	4.34a Ast	4.28 L4	4.20 L2	4.19 L1	1.8 x	4.35 Wa
	Ah	kg	mm	mm	mm	mm	mm	mm	mm
NR14N3C	465	708	2716	2778	457	1293	2443	305	1598
	620	890	2786	2861	367	1383	2533	215	1598
	775	1063	2859	2945	227	1473	2623	125	1598

- 1) T mast +7mm
- 2) T mast +17mm
- 3) T mast +9mm
- 4) T mast +18mm
- 5) T mast -28mm
- 6) T mast - 8mm



NR14N3C shown with tapered overhead guard and rail guidance options.

WESC2123-01 (04/24) © 2023 MLE B.V. (registration no. 33274459). © 2024 Mitsubishi Logisnext Americas Inc. All rights reserved. CAT, CATERPILLAR, LET'S DO THE WORK, their respective logos, "Caterpillar Corporate Yellow", the "Power Edge" and Cat "Modern Hex" trade dress as well as corporate and product identity used herein, are trademarks of Caterpillar and may not be used without permission.

NOTE: Performance specifications may vary depending on standard manufacturing tolerances, vehicle condition, types of tyres, floor or surface conditions, applications, or operating environment. Trucks may be shown with non-standard options. Specific performance requirements and locally available configurations should be discussed with your Cat lift trucks Dealer. Cat Lift Trucks follows a policy of continual product improvement. For this reason, some materials, options and specifications could change without notice.

